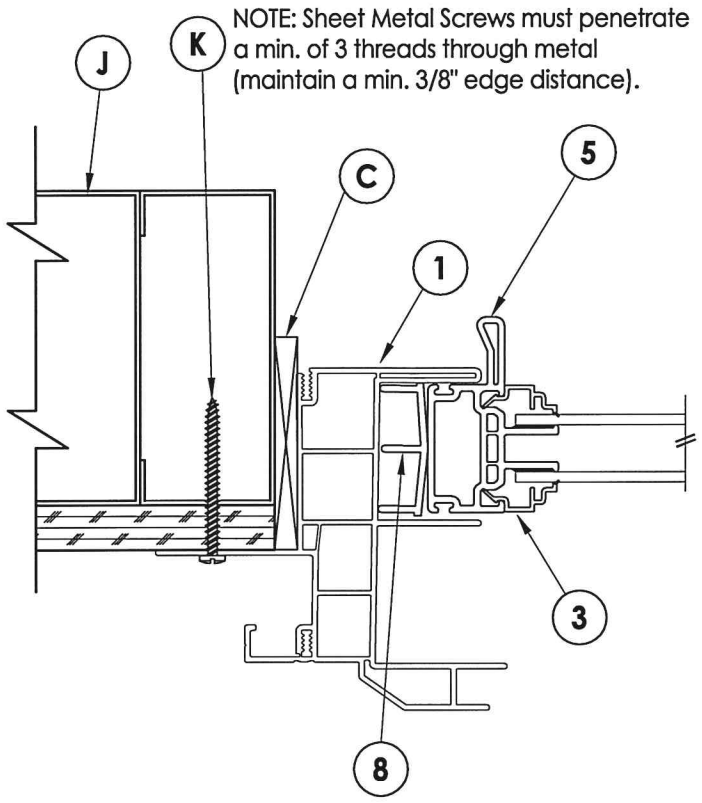
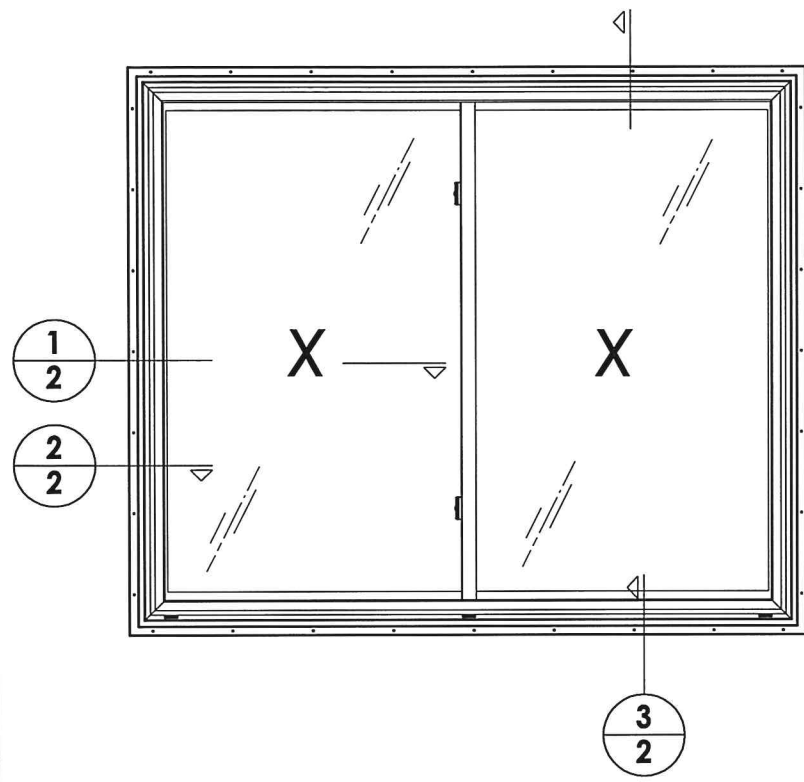
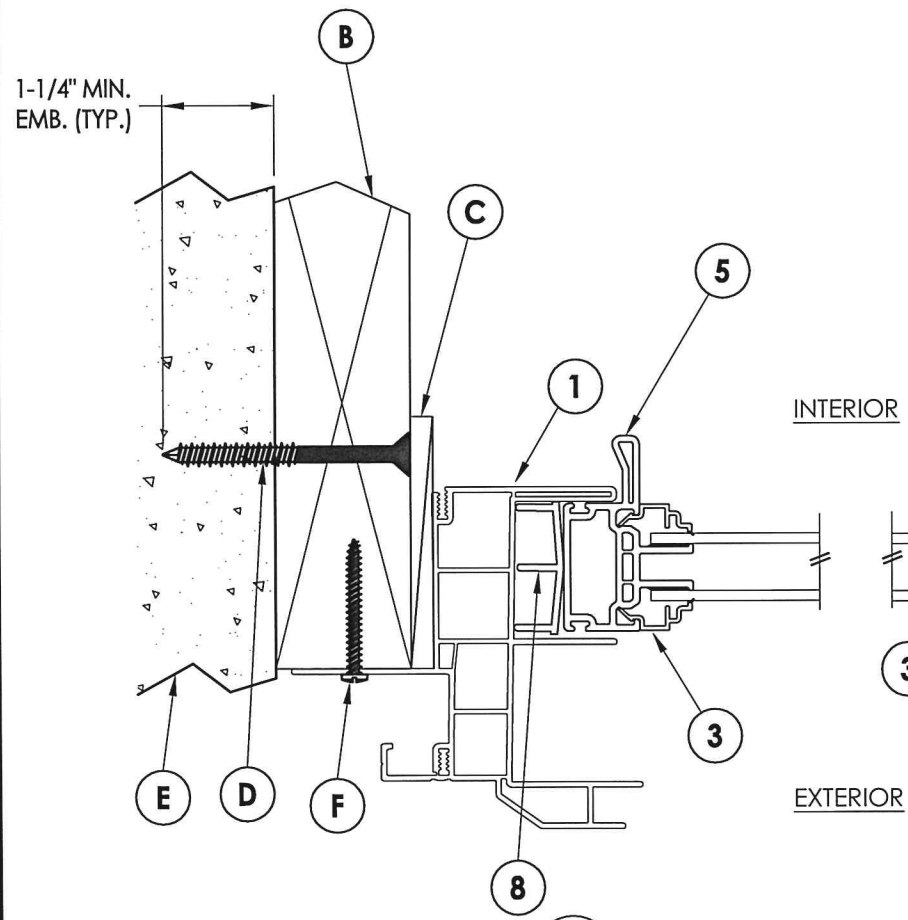




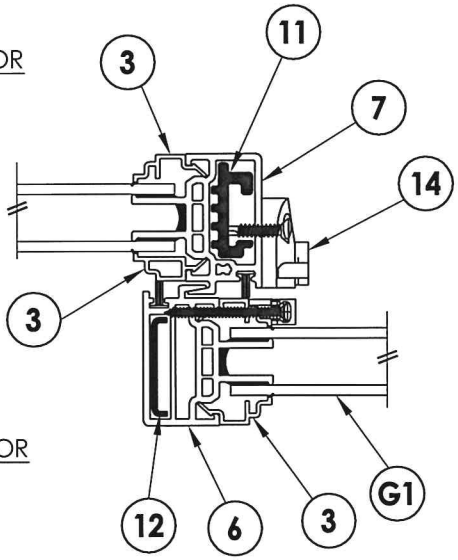
R:\Clients\Doers PERMANENT\A - Florida Product Approvals\FL-16853 Windows - Horizontal Sliders\C - Drawings\FL-16853 (2014)\FL-16853.13-18.dwg, 2.17



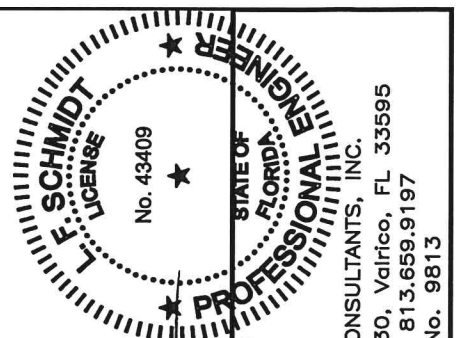
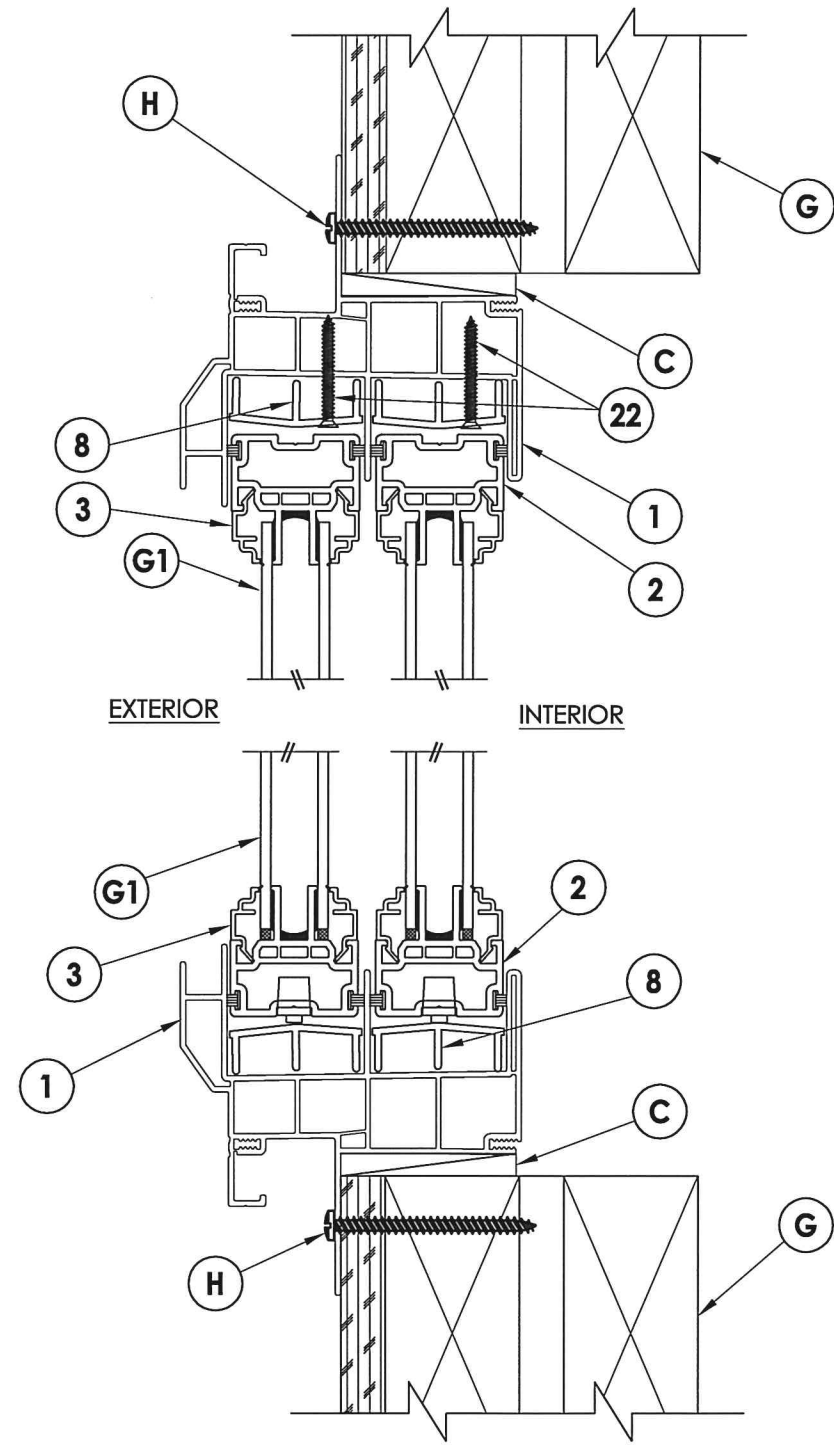
**2 HORIZONTAL CROSS SECTION**  
Shown w/ Steel Stud Framing Option



**1 HORIZONTAL CROSS SECTION**  
2X Buck Masonry Construction



**3 VERTICAL CROSS SECTION**  
Stud Construction



Documents Prepared By:  
Lyndon F. Schmidt  
P.E. No. 43409

*LFS*  
9.27.15

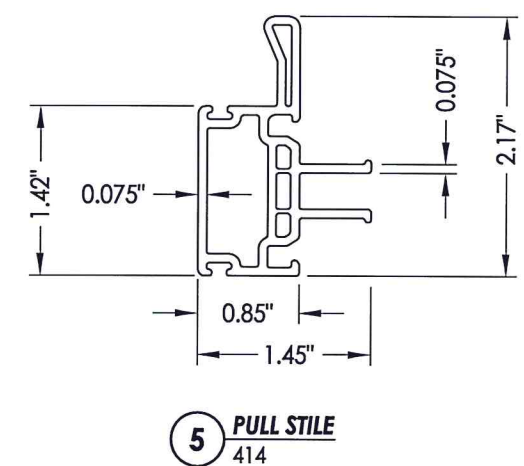
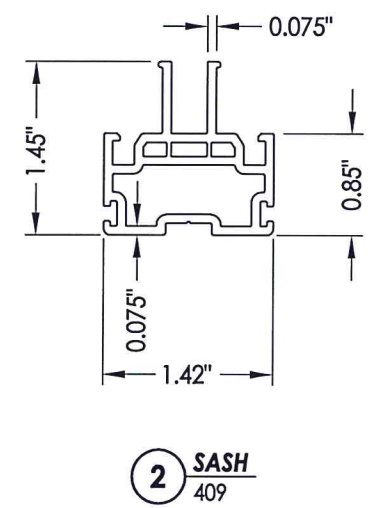
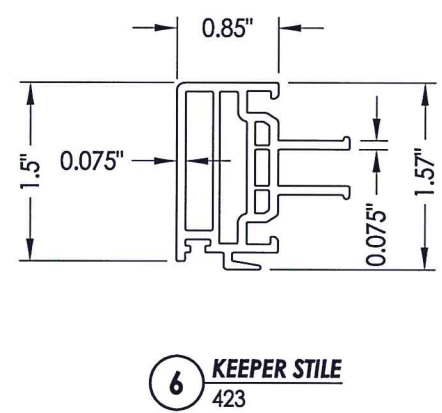
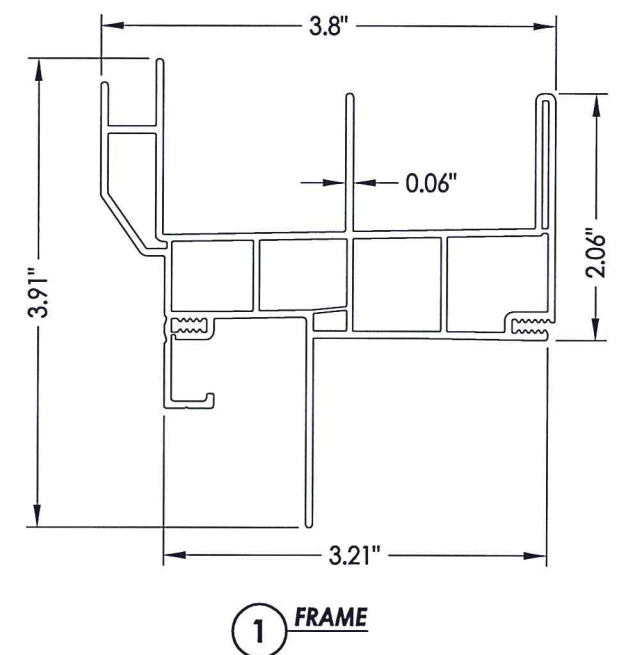
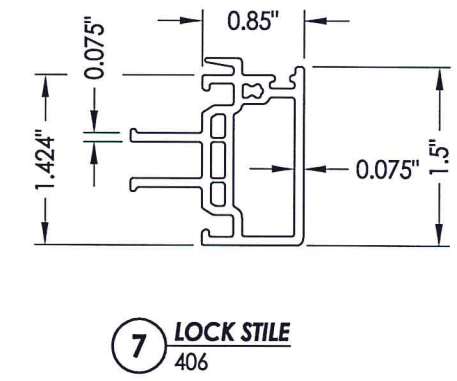
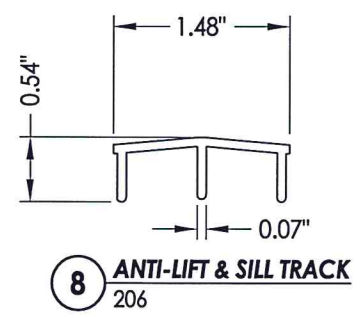
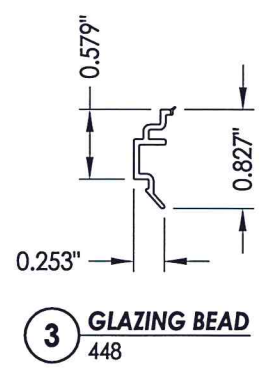
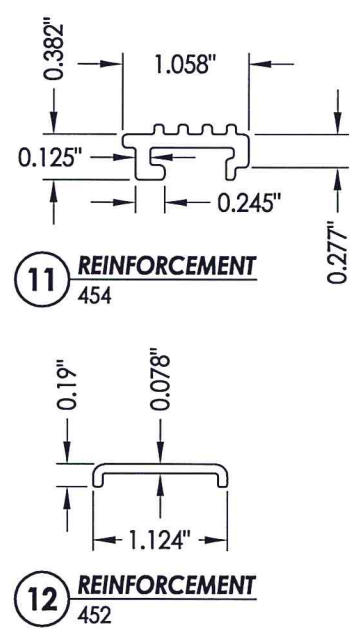
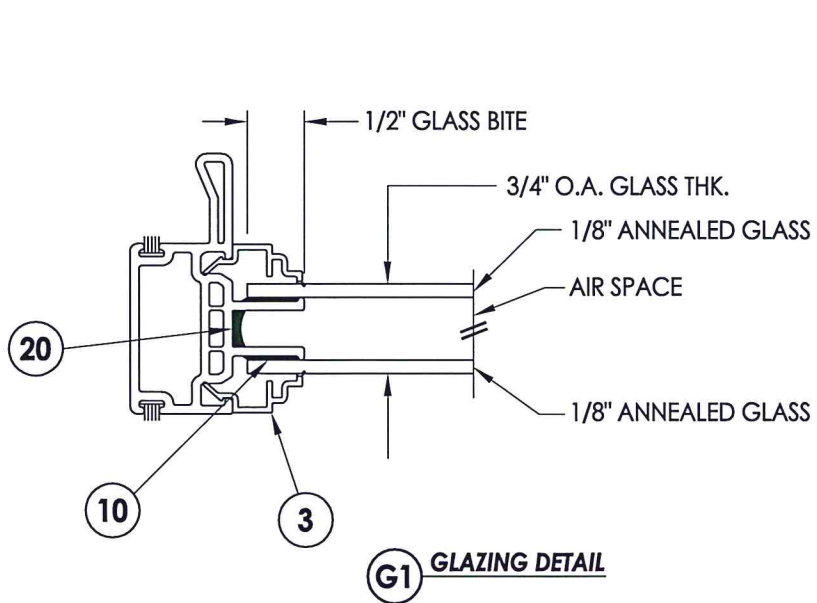
**RW** BUILDING CONSULTANTS, INC.  
P.O. Box 230, Valrico, FL 33595  
Phone No.: 813.659.9197  
FBPE C.A. No. 9813

PRODUCT:	HORIZONTAL SLIDER
PART OR ASSEMBLY:	HORIZONTAL AND VERTICAL CROSS SECTIONS
DATE:	12/14/11
SCALE:	N.T.S.
DWG. BY:	JK
CHK. BY:	LFS
DRAWING NO.:	FL-16853.17
SHEET	2 OF 4
NO.	1
DATE	6/25/15
REVISIONS	UPDATE TO 5TH ED. (2014) FBC
BY	LFS



BILL OF MATERIALS		
ITEM #	DESCRIPTION	MATERIAL
B	2X BUCK (SG >= 0.42)	WOOD
C	1/4" MAX. SHIM SPACE	-
D	1/4" X 2-3/4" PFH ELCO OR ITW CONCRETE SCREW	STEEL
E	MASONRY - 3,000 PSI MIN. CONCRETE CONFORMING TO ACI 301 OR HOLLOW BLOCK CONFORMING TO ASTM C90	CONCRETE
F	#10 X 1-1/2" PPH SMS (1-3/8" MIN. EMBEDMENT)	STEEL
G	2X STUD (SG >= 0.42)	WOOD
H	#10 X 2" PPH SMS (1-3/8" MIN. EMBEDMENT)	STEEL
J	STEEL STUD Min. Thk .033" (ASTM A653 GRADE 33 Fy=33 ksi min., Fu=45 ksi min.)	STEEL
K	#10 PPH SELF-DRILLING SMS	STEEL
1	FRAME *	PVC
2	RAIL *	PVC
3	GLAZING BEAD *	PVC
5	PULL STILE*	PVC
6	KEEPER STILE*	PVC
7	MEETING STILE*	PVC
8	ANTI-LIFT & SILL TRACK*	PVC
10	GLAZING SILICONE (SashSeal)	-
11	REINFORCEMENT (6065-T5)	ALUM
12	REINFORCEMENT (6065-T5)	ALUM
14	LOCK ASSEMBLY (TRUTH)	STEEL
20	LIQUID APPLIED DESICCANT (SashDri)	-
22	#6 X 1-1/4" PFH SMS	STEEL

\* THE APPROVED WHITE RIGID PVC EXTERIOR EXTRUSIONS FOR WINDOWS ARE TO BE PRODUCED BY EXTRUDERS LICENSEES IN "AAMA CERTIFICATION PROGRAMS FOR RIGID PVC EXTRUSIONS".



Documents Prepared By: *LFS*  
 Lyndon F. Schmidt  
 P.E. No. 43409

**R.W.** BUILDING CONSULTANTS, INC.  
 P.O. Box 230, Valrico, FL 33595  
 Phone No.: 813.659.9197  
 FBPE C.A. No. 9813

PRODUCT: HORIZONTAL SLIDER	
PART OR ASSEMBLY: BILL OF MATERIALS, GLAZING DETAIL & COMPONENTS	
NO.	DATE
1	6/25/15
UPDATE TO 5TH ED. (2014) FBC	
LFS	BY
REVISIONS	
DATE: 12/14/11	
SCALE: N.T.S.	
DWG. BY: JK	
CHK. BY: LFS	
DRAWING NO.: FL-16853.17	
SHEET 4 OF 4	